

Annual Conference & General Meeting 2009

The Inreach Service

Martin Stringer
Roisin White

www.cedar-foundation.org

Inreach Service



- Commissioned in January 2009 – Big Lottery Funded (£400,000)
- Three year pilot, Target 148 Hours p/w to 10-12 families
- Partnership with Belfast H&SCT Community Nursing Team



www.cedar-foundation.org

Inreach Service



The McConkey report 2007 described children with complex health care needs as

“Those who require a range of additional support services beyond the type and amount required by children generally and those usually provided to children with impairments and long term illnesses”

www.cedar-foundation.org

Inreach Service

Main objectives of the service are:

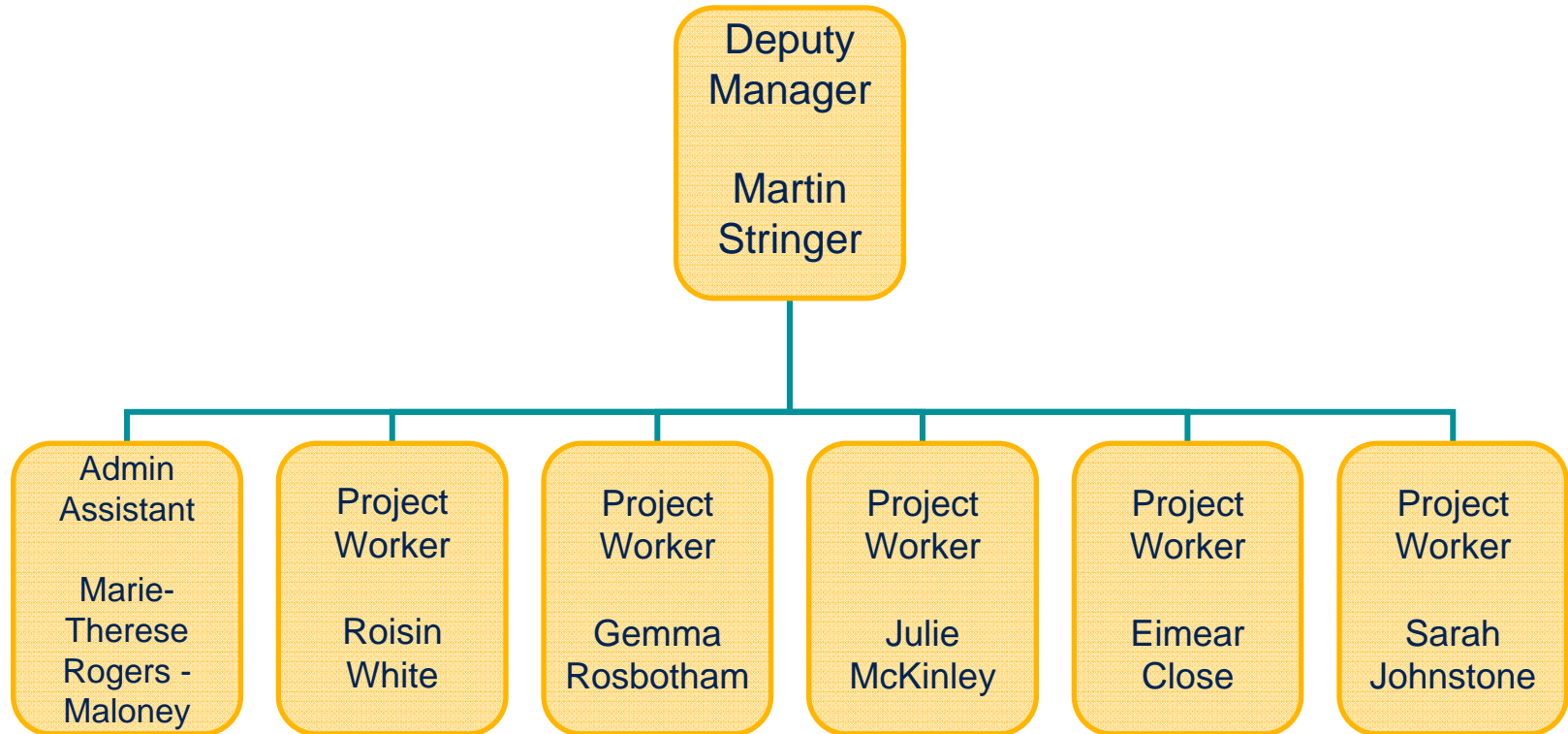
- Develop a family support service to support families of children with complex health care needs that will respond to the individual needs of the child and the family.
- Work in partnership with the Trust to provide a quality service offering a high standard of care for children with complex needs and their families

www.cedar-foundation.org

Inreach Service

- Promote an innovative model of practice which will empower families, facilitate time for siblings and promote whole family well-being allowing therapeutic opportunities, quality time, independence and the living of life for all family members.

Inreach Service



Inreach Service



EVALUATION 2010

Independent evaluation of the service will commence next year which will gauge impact and determine future direction

A decorative brushstroke in the bottom left corner, consisting of three overlapping horizontal strokes in yellow, dark blue, and teal.

www.cedar-foundation.org

Annual Conference & General Meeting 2009

The Inreach Service

Martin Stringer
Roisin White

www.cedar-foundation.org